

Shared Hygiene, LLC

LACY WALKER

RDH, BS, FAADH, FAAOSH

International Speaker

CE Approved Provider

Clinician

Researcher

President-Elect of AADH

Public Relations Chair for AADH

CONTACT:

703-725-2831

www.sharedhygiene.com

[@sharedhygiene](#), [@lacyrdh](#)



Shared Hygiene, LLC

LACY WALKER

RDH, BS, FAADH, FAAOSH

Executive profile

With over two decades of experience in the dental field, Lacy Walker is an internationally recognized speaker, an approved continuing education (CE) provider, and a dedicated researcher. As the President - Elect and Public Relations Chair of the American Academy of Dental Hygiene (AADH), Lacy Walker brings a wealth of leadership and expertise to every engagement. Her work bridges clinical excellence with evidence-based education and global collaboration.

Advancing dental hygiene through evidence-based education and global collaboration.

CONTACT:

703-725-2831

www.sharedhygiene.com

[@sharedhygiene](#), [@lacyrdh](#)

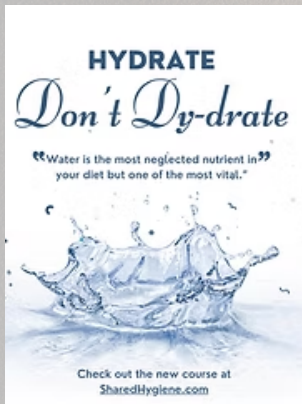


SPEAKER PACKET

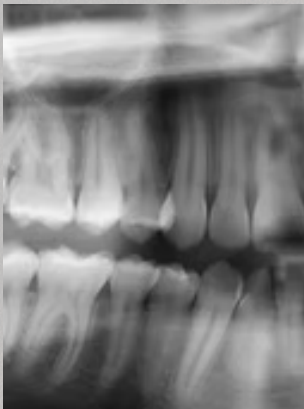
COURSES



*Facing the Consequences:
Unmasking the Impact of
Nutritional & Airway Deficiency*



*Hydrate So You Don't Dy-
drate*

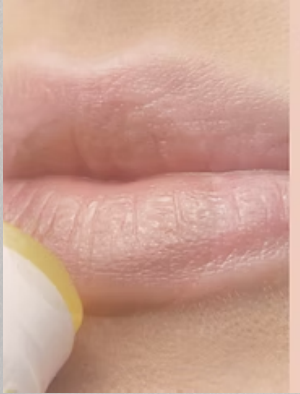


*Are You Curie-ous About
Radiation*

Shared Hygiene, LLC

SPEAKER PACKET

COURSES



All About the Lips



Microbial Mindfulness: Infection Control In the Dental Setting



Gingivitis: An Oral Systemic Connection

Shared Hygiene, LLC



Speaker Package



Live Webinar - 1 hour

- Logo on slides
- 1-2 verbal mentions
- Product listed in resource slide
- Tag in social media posts on FB, IG, and LI



Live Webinar - 1-2 hours

- Logo on slides
- 3 verbal mentions
- Products listed in the resource slide and during presentation
- Tag in social media posts on FB, IG, and LI



In-Person Presentation

- Logo on slides
- 3 verbal mentions
- Products listed in the resource slide and during presentation
- Tag in social media posts on FB, IG, and LI

Shared Hygiene, LLC

sharedhygienellc@gmail.com

703-725-2831

www.sharedhygiene.com

@sharedhygiene, @lacyrdh

